



Commercial Property
Zoned C-2

2100 Northeast Boulevard
Wilmington, DE 19801



FOR SALE

Masonry Office/Shop Auto Service Facility

GREAT NEW PRICE

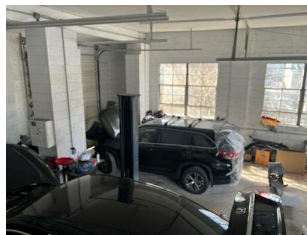
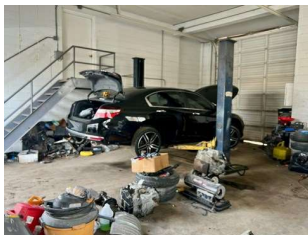
\$475,000

MLS #DENC2053174 | BR, BA

EXECUTIVE SUMMARY

1 and 2 story structure on two fenced parcels totaling approximately .47 acres in the heart of the Reach Redevelopment District.

- 2 Drive in bays
- Finished office space (2096sf)
- (1056 sq ft * 14 ft height) - Modern HVAC
- Fenced service yards (2) - Unfinished office (2096 sf)
- Easy access to I 495 used for inventory storage
- at Edgemoor or 12th St. - Restroom on each level



Tom Wheeler

REALTOR®
Associate Broker
302-529-2613 direct
302-475-0800 office
tom.wheeler@psre.com



<https://listing.psre.com/BR11154>



This information is provided as a courtesy only, it is not a warranty and should be independently investigated by buyers.