


Welcome to

207 Stonechase Drive
Mendenhall Corner



Presented By:
Kelly Ralsten
(302) 576-6836
kralsten@psre.com



A photograph of a house's front porch. The central feature is a red door with a decorative wreath of autumn leaves and pumpkins. The door has the number '207' on it. To the left of the door is a large pot of bright yellow mums, and a single orange pumpkin sits on the porch next to it. To the right of the door is a wooden Adirondack chair with a striped cushion. The porch is bordered by a stone ledge. The house has white horizontal siding and a white column on the left. A black lantern-style light fixture is mounted on the wall to the right of the door. The overall scene is bright and sunny, suggesting a clear day.

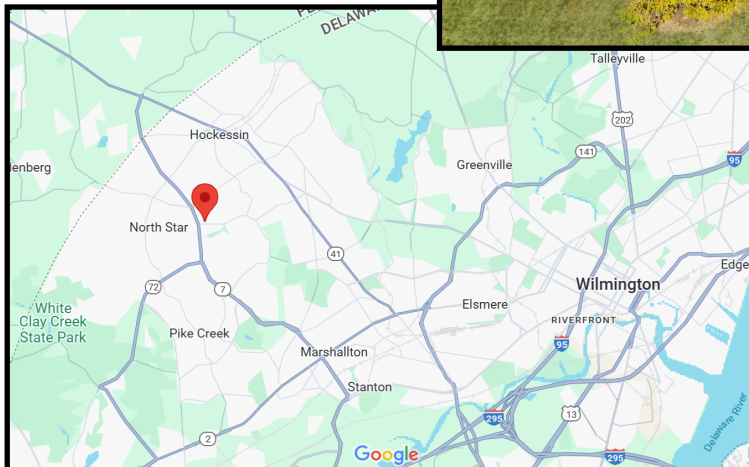
We would like to thank you for taking the time to view this home. Enclosed you will find information regarding this property that will assist you in making your buying decision. We would be more than happy to assist either you or your Realtor if you have further questions.

Warmest Regards,
Kelly Ralsten

"Your Vision Is Our Passion"

Welcome

Welcome to 207 Stonechase Drive in the highly desirable Hockessin neighborhood of Mendenhall Corner. This custom home features almost 4000 square feet of living space with five bedrooms, two full and one half bathrooms, Gourmet Kitchen, Living Room, Dining Room, Family Room, Laundry Room, finished lower level and three car turned Garage. The home is beautifully situated on a large lot towards the end of a cul-de-sac.

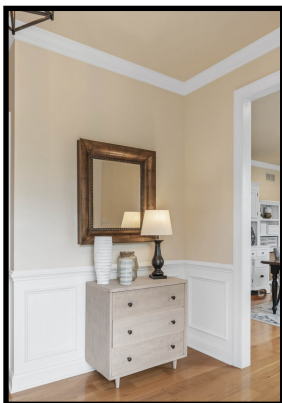


Mendenhall Corner is well located in Hockessin in northern New Castle County, near the Pennsylvania state line. It is minutes from major highways, shopping, restaurants and schools.

The difference is in the details

Expert craftsmanship & the highest quality materials are used throughout this home:

- Low maintenance beaded vinyl siding, architectural shingle roof, stone veneer wall and Pella windows
- Quality flooring includes gleaming hardwoods and ceramic tile
- Gourmet Kitchen with new and updated appliances
- Designer lighting fixtures
- Upgraded trim throughout~two piece crown molding, chair rail, wide base trim, and custom wainscoting
- Laundry Room with built-in cubbies and bench
- Finished Lower Level with egress
- Paver patio with Firepit and Trex deck



Gracious Living Spaces



Beautifully situated on an almost half-acre lot, this colonial style home with a three car turned garage was built with high quality, low maintenance materials including beveled bead vinyl siding, stone veneer half wall, and architectural dimensional shingle roof. The stone aggregate walkway leads to the covered front door, with slate step, and two decorative columns. Enter the through the door with glass transom and two sidelights.



Foyer



Step into the Foyer with gleaming hardwood floors, wainscoting, crown molding and designer light fixture. A beautiful staircase with exposed wood treads leads to the second floor. The Foyer is open to the Dining and Living Rooms, with views to the Kitchen.



Dining Room



The Dining Room has hardwood floors, two-piece crown molding, chair rail, wainscoting, two windows with custom window treatments and a designer black wrought iron chandelier. The Dining Room is open to the Foyer and to the Kitchen.



Living Room



The Living Room is a spacious and versatile room with recessed lights, designer light fixture, crown molding, and two windows with custom plantation blinds.



Heart of the Home



From the hardwood floors up to the recessed lights, this Gourmet Kitchen is well designed and crafted with quality materials and attention to every detail. There is an abundance of space for food prep, storage, organization and entertaining. The 42” wood cabinetry features roll out drawers. The counters are granite topped with a subway tile backsplash. The Blanco double undermount sink has disposal and Moen oil rubbed fixture.

Gourmet Kitchen



Quality stainless steel appliances include a new GE four burner gas cooktop with Broan hood, new Whirlpool microwave, updated Jenn Air double wall convection oven, Bosch French Door Refrigerator and Frigidaire dishwasher.



Gourmet Kitchen



Kitchen space flows to the open Family Room and includes a generous table area, with designer black wrought iron chandelier and views through the sliding glass doors to the Trex deck, and yard beyond.



Kitchen Extras



The Pantry features custom cabinetry and is conveniently located next to the Refrigerator



The Coffee Station provides extra space for beverage prep with honed granite counter, Frigidaire Refrigerator and glass front cabinet



Designer pendants highlight space for an extra table or prep station

Family Room



This open floor plan Family Room flows from the Kitchen, with hardwood floors, recessed lights, two single windows and one double window. A beautiful stone gas Fireplace with slate hearth, mantle and stone surround highlights this room.



First Floor Extras



Adjacent to the Kitchen is the Laundry Room with tile floor, bead board walls, bench, built in cubbies, cabinets, and closet. There are additional closets in the hall nearby. The Powder Room is also on the first floor and features hardware floors.



Up to the Second Floor



The staircase with exposed wood treads leads to the upper level with five Bedrooms and two full Bathrooms. There is custom wainscoting and a Linen closet in the Hall.



Primary Bedroom Suite



The Primary Suite is spacious and comfortable, with a double door entry, carpeted floors, recessed lighting and ceiling fan. The Vanity table, large mirror and designer chandelier are included. There are three windows two walk in closets with custom built-ins.



Primary Bedroom Suite



The Primary Bath is sizeable and spa-like, with an oversized shower with glass doors and tile surround, luxurious soaking tub, long vanity with two sinks and a separate water closet. There is recessed lighting and a tile floor.



Bedroom Two



Bedroom Two features three windows, ceiling fan with light, carpeted floors and an oversized double door closet with custom built ins.



Bedroom Three



Bedroom Three features one window, recessed lighting, carpeted floors and attic access.



Bedroom Four



Bedroom Four features two windows with plantation blinds, ceiling fan with light, carpeted floors, and wide double door closet with custom built ins.



Bedroom Five



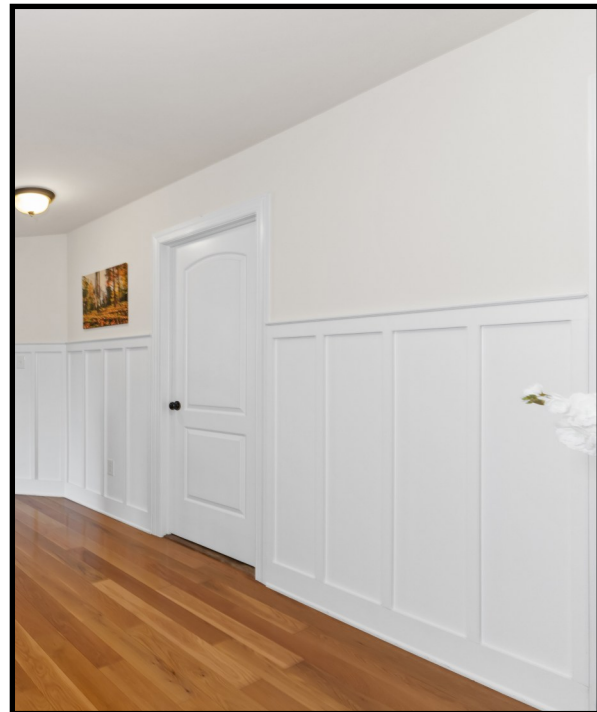
Bedroom Five features two windows, carpeted floors, ceiling fan with light, and two double door closets.



Also on the Second Story



The full Hall Bathroom has double sink vanity, tile floor, and tub/ shower with surround. Also in the Hallway, there is a Linen closet and custom wainscoting.



Lower Level



The finished Lower Level expands the entertaining, living, relaxing and storage spaces of this home. Professionally finished, there is an egress window, recessed lighting, dropped ceiling, carpeted floors and built in shelves. This versatile space can easily accommodate large pieces of furniture, media, game tables, and exercise equipment.



Beautiful Outdoors

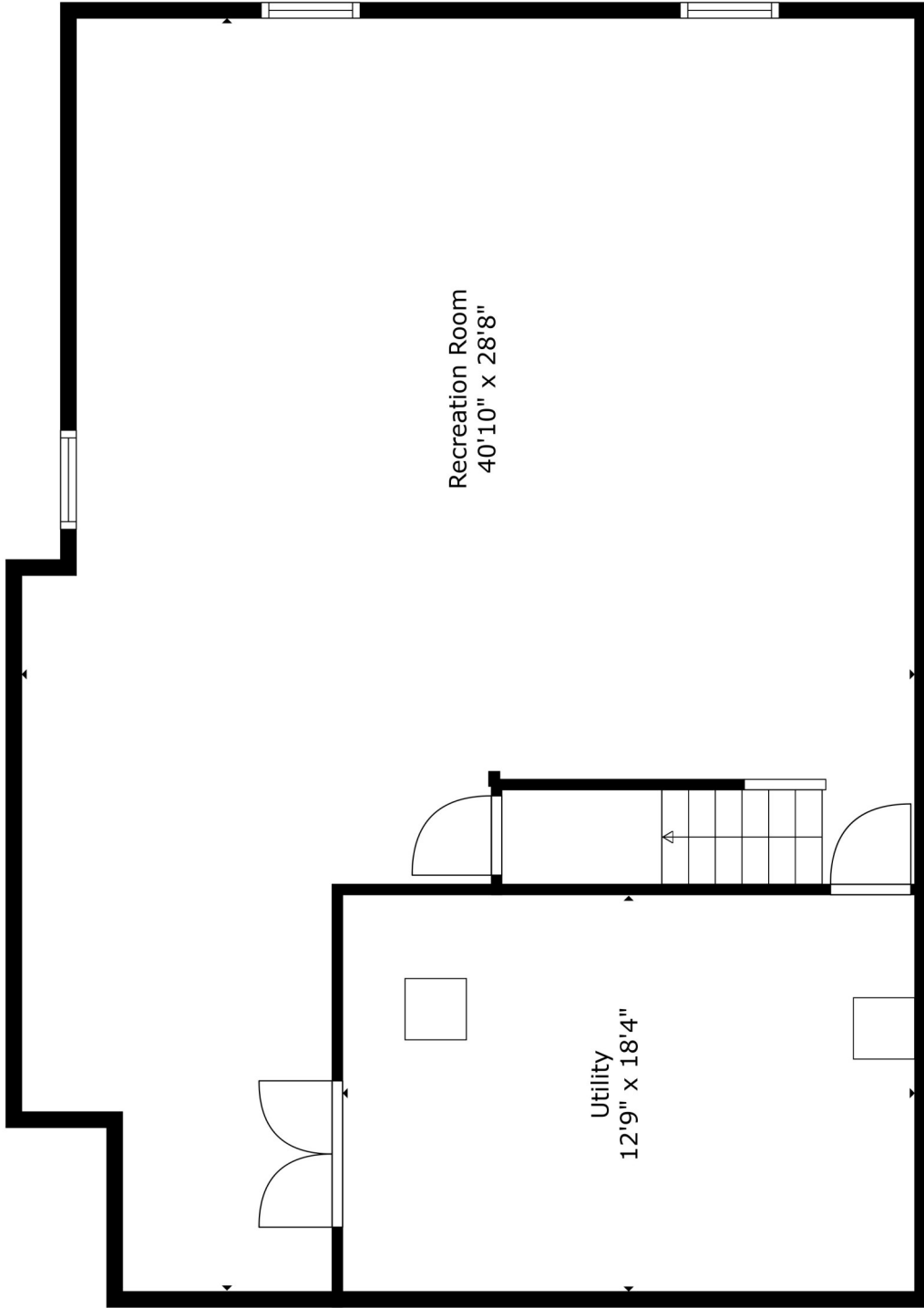


Trex Deck has sliding glass doors from the Kitchen and steps to the expansive paver patio, providing beautiful outdoor spaces. The lot is almost a half-acre, and the backyard offers open space, yet still feels peaceful and private.



Home Systems

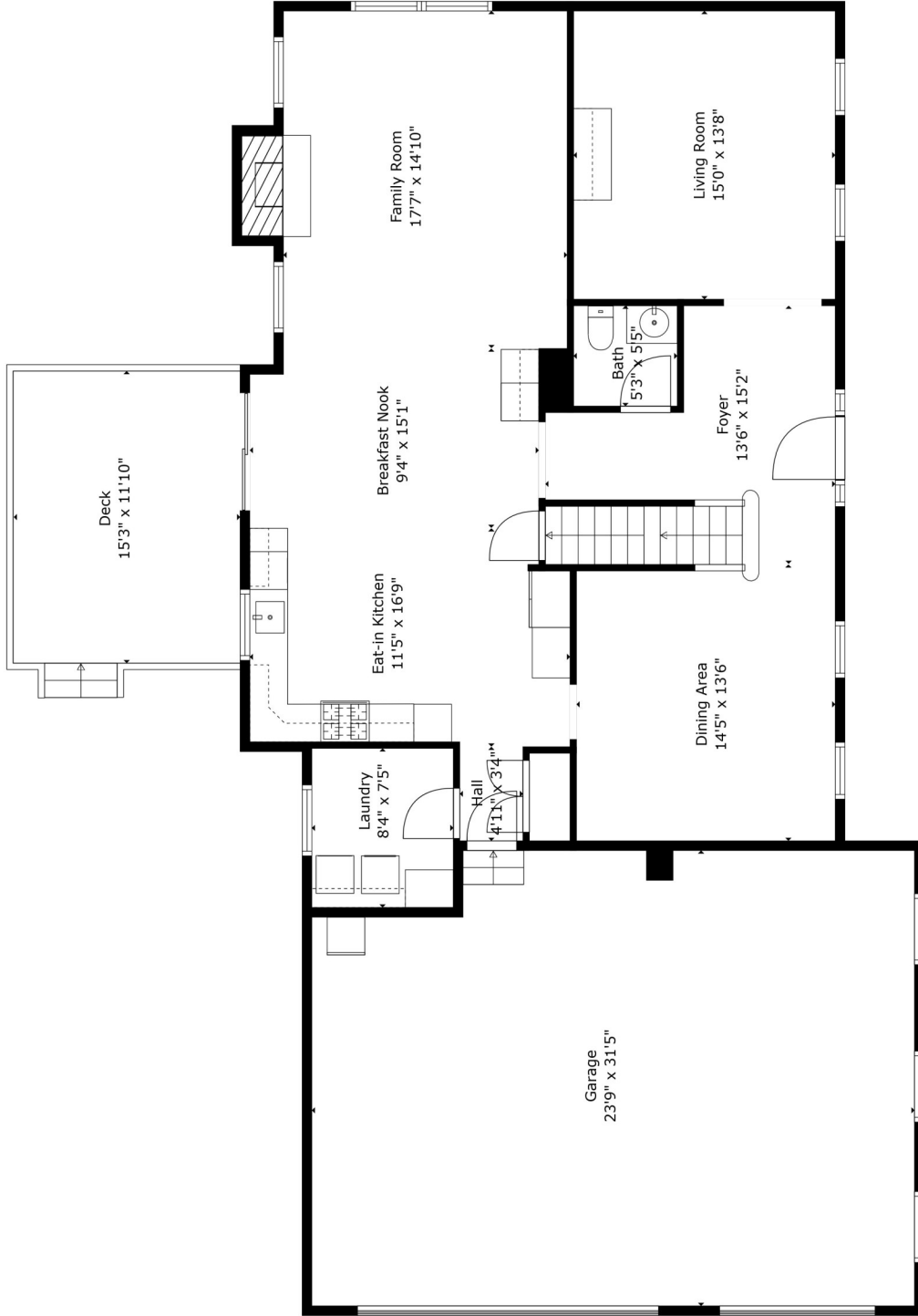
- Custom 5 bedrooms, 2 full and one half bath home with 3 car turned Garage
- Exterior details include Architectural shingle roof, 3 dormer windows, beveled bead vinyl siding, stone veneer accent wall
- Pella windows throughout
- Custom blinds and window treatments throughout
- Two-panel arch raised interior doors
- Gas Fireplace in Family Room
- Oil-rubbed bronze hardware throughout
- Energy efficient 75 gallon gas water heater
- Dual York gas HVAC systems
- Sump Pump
- 200 amp electric box
- Insulated walls in basement
- Trex Deck
- Paver Patio with Firepit



TOTAL: 3964 sq. ft.
BELOW GROUND: 888 sq. ft. FLOOR 2: 1301 sq. ft. FLOOR 3: 1775 sq. ft.
EXCLUDED AREAS: UTILITY: 234 sq. ft. GARAGE: 719 sq. ft. DECK: 180 sq. ft.
FIREPLACE: 14 sq. ft.

Floor Plan Created By Cubicasa App. Measurements Deemed Highly Reliable But Not Guaranteed.



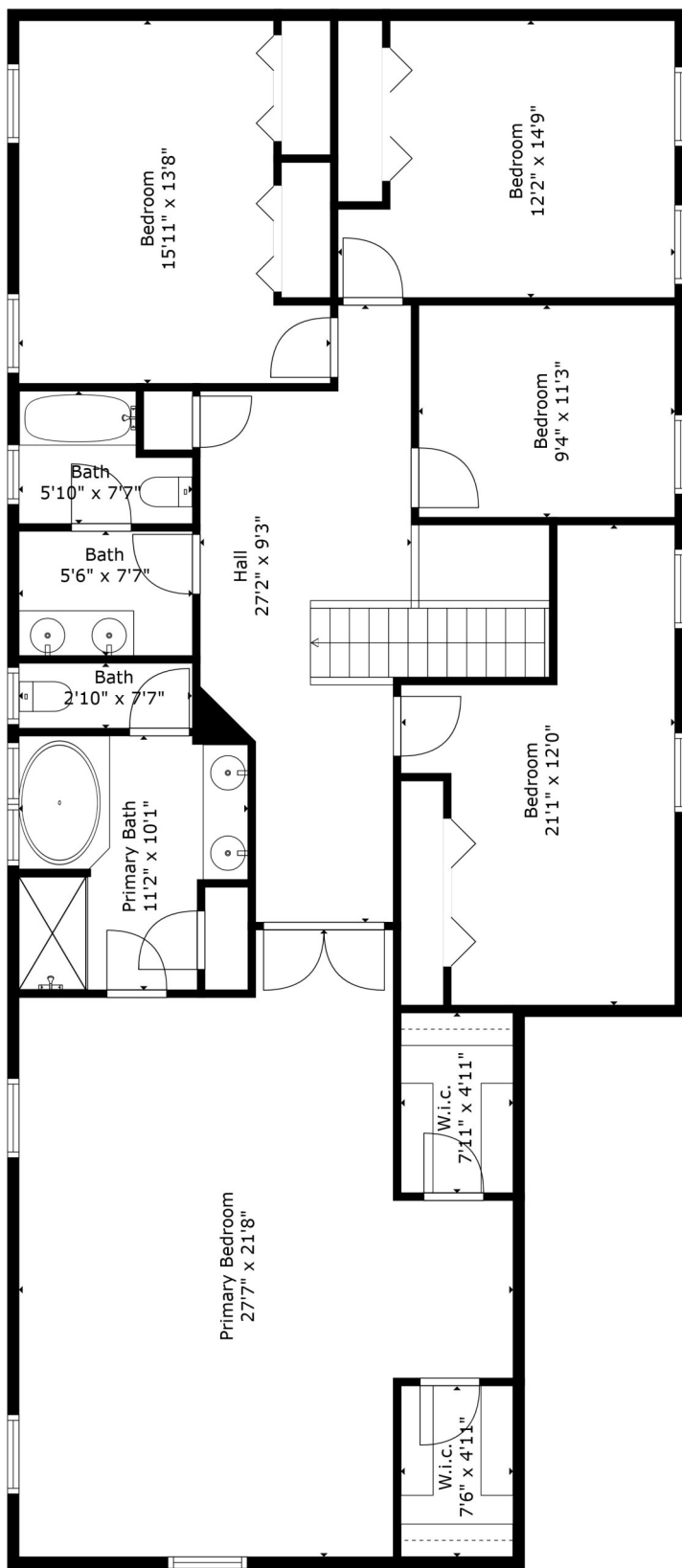


TOTAL: 3964 sq. ft

BELOW GROUND: 888 sq. ft, FLOOR 2: 1301 sq. ft, FLOOR 3: 1775 sq. ft
 EXCLUDED AREAS: UTILITY: 234 sq. ft, GARAGE: 719 sq. ft, DECK: 180 sq. ft,
 FIREPLACE: 14 sq. ft

Floor Plan Created By Cubicasa App. Measurements Deemed Highly Reliable But Not Guaranteed.

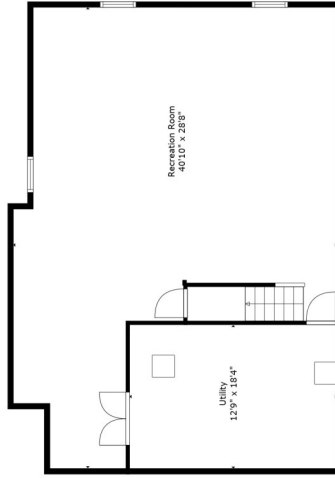
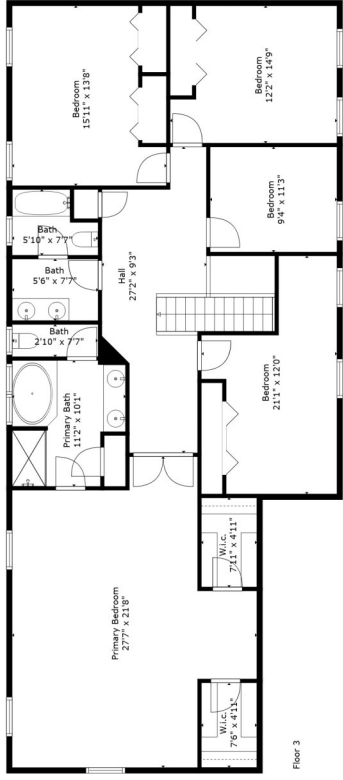
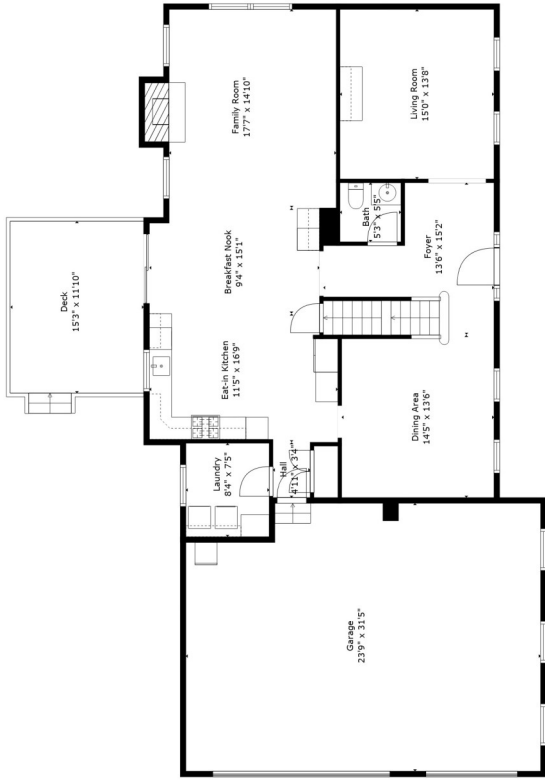




TOTAL: 3964 sq. ft.
 BELOW GROUND: 888 sq. ft.; FLOOR 2: 1301 sq. ft.; FLOOR 3: 1775 sq. ft.
 EXCLUDED AREAS: UTILITY: 234 sq. ft.; GARAGE: 719 sq. ft.; DECK: 180 sq. ft.;
 FIREPLACE: 14 sq. ft.

Floor Plan Created By Cubicasa App. Measurements Deemed Highly Reliable But Not Guaranteed.





TOTAL: 3964 sq. ft.
 BELOW GROUND : 888 sq. ft, FLOOR 2: 1301 sq. ft, FLOOR 3: 1775 sq. ft
 EXCLUDED AREAS: UTILITY: 234 sq. ft, GARAGE: 719 sq. ft, DECK: 180 sq. ft,
 FIREPLACE: 14 sq. ft

Floor Plan Created By Cubicasa App. Measurements Deemed Highly Reliable But Not Guaranteed.

