

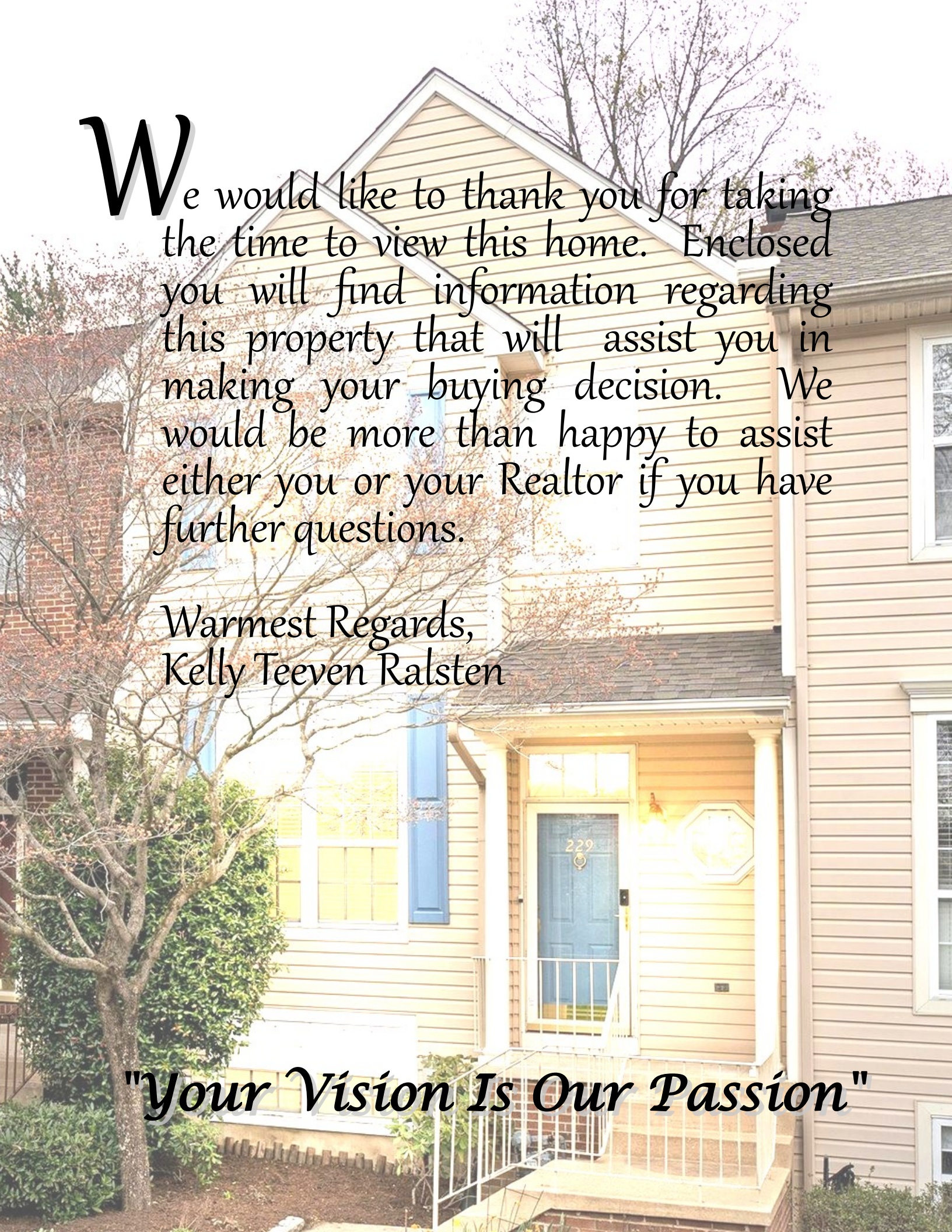
Welcome to

229 Cayman Court
North Pointe



Presented By:
Kelly Ralsten
(302) 383-3538





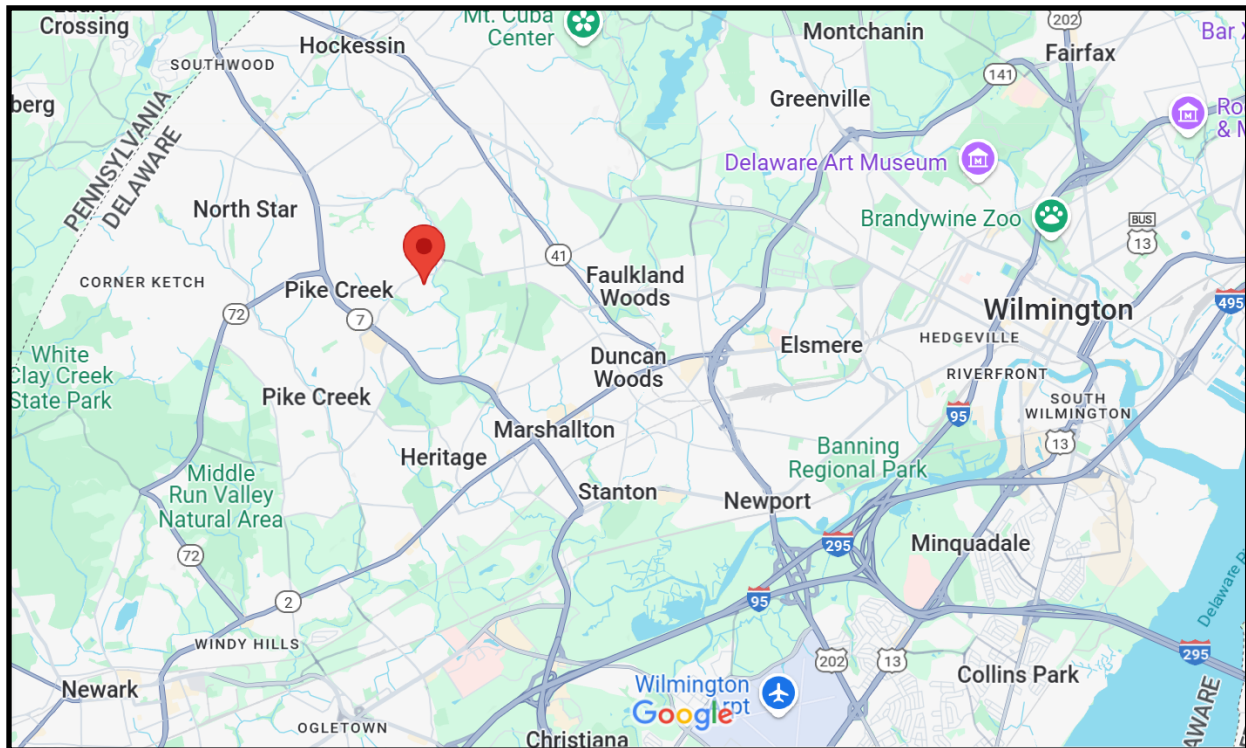
We would like to thank you for taking the time to view this home. Enclosed you will find information regarding this property that will assist you in making your buying decision. We would be more than happy to assist either you or your Realtor if you have further questions.

Warmest Regards,
Kelly Teeven Ralsten

"Your Vision Is Our Passion"

Welcome

Welcome to 229 Cayman Court in the Pike Creek neighborhood of Northpointe. This townhome features three Bedrooms, two full and one half Bathrooms, entry Foyer, Eat in Kitchen, Living Room, Dining Room, Family Room, Laundry/Utility Room, and Deck. The upstairs carpeting is brand new.



Well located on a cul-de-sac, there is extra guest parking nearby. It is just minutes to major highways, shopping, and schools. You will have easy access to Limestone Road, Kirkwood Highway, I-95, The Shoppes of Limestone Hills, Pike Creek Shopping Center, Delcastle Park, Carousel Park and more.

Gracious Living Spaces



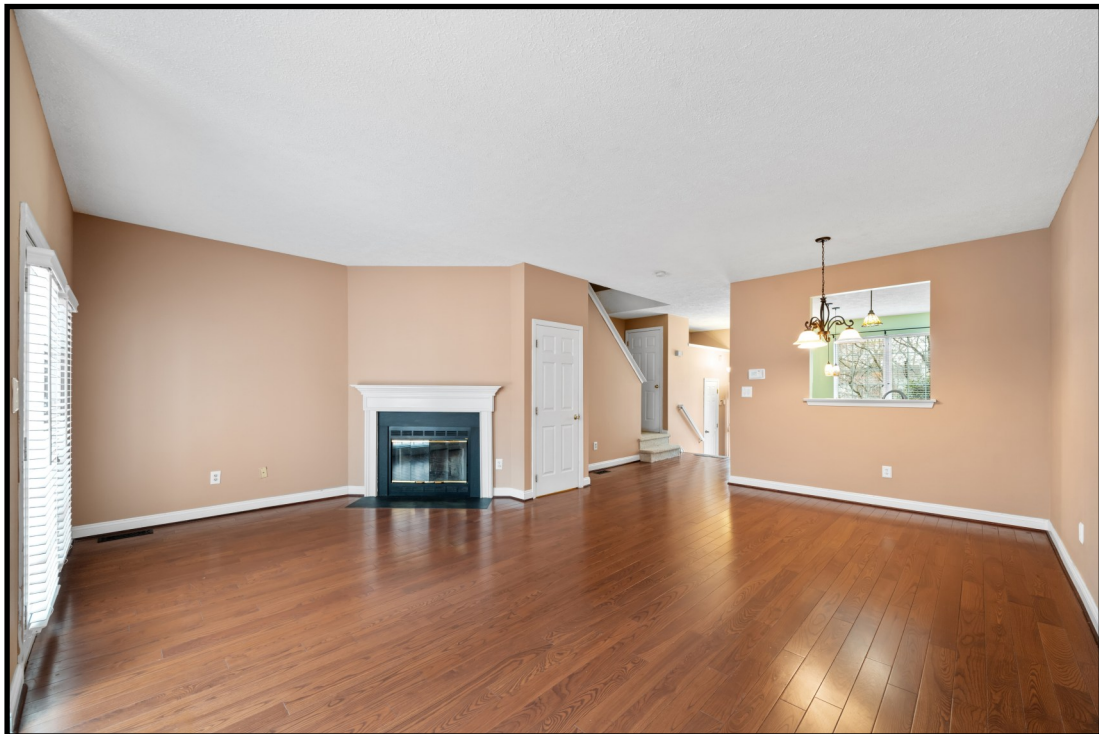
Steps lead to the Front door with full view storm door, and glass transom. Enter into the light filled Foyer with tile floor, wrought iron Chandelier, Powder Room and Coat Closet.



Dining Room



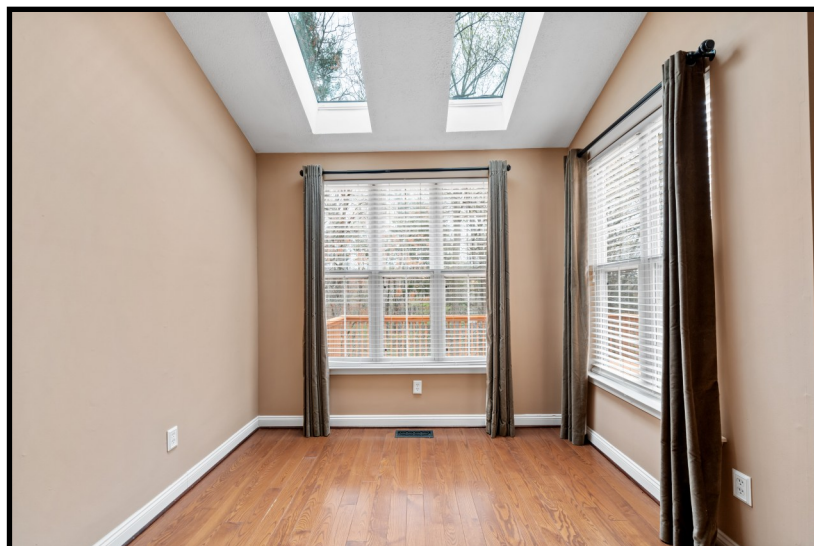
The Dining Room is open to the Living Room, with a pass-thru window to the Kitchen. A wrought iron chandelier hangs over the table area.



Living Room



The Living Room is bright and spacious and room with an open floor plan to include Dining Room. Double French doors open to the well-sized Deck, overlooking wooded Community open space. There are hardwood floors, vaulted ceiling and wood burning Fireplace with slate hearth and surround, and a wood mantel. Two skylights and windows on two sides create a sunny alcove that overlooks the backyard.



Kitchen



This eat-in Kitchen features hardwood floors, granite countertops, large island with seating area for three, Pantry, and two oversized windows. Decorative lighting includes glass pendants over the island and a stained glass fixture over the sink area.



Kitchen



Quality stainless steel appliances include Kenmore Elite refrigerator, Kenmore oven with smooth cooktop, Whirlpool built-in microwave with exhaust fan, and Bosch dishwasher.



Flex Room



The lower level is expansive, with sliding glass doors that open to a Patio, and yard beyond. This versatile “Flex Room” is spacious and open, able to easily accommodate large pieces of furniture, media, game tables or exercise equipment. There is a gas Fireplace, and lots of storage, including an under stairs closet, and a doored storage area with shelving.



Laundry & Utility Room



The Laundry Room is spacious with built in shelves, countertop and utility sink. The newer Samsung washer and dryer are included.



Primary Bedroom Suite



The Primary Bedroom features dramatic vaulted ceiling, ceiling fan with light, and walk in closet.



Primary Suite



The private full Bathroom was renovated to include tile floors, tile shower with glass doors, and vanity with sink.

Bedrooms Two and Three



Both Bedrooms feature new carpeting, windows with Plantation blinds and generous closets.



Outdoor Fun



Enjoy the Deck, which opens from the Living Room and overlooks the backyard and wooded Community open space.



Around the Neighborhood

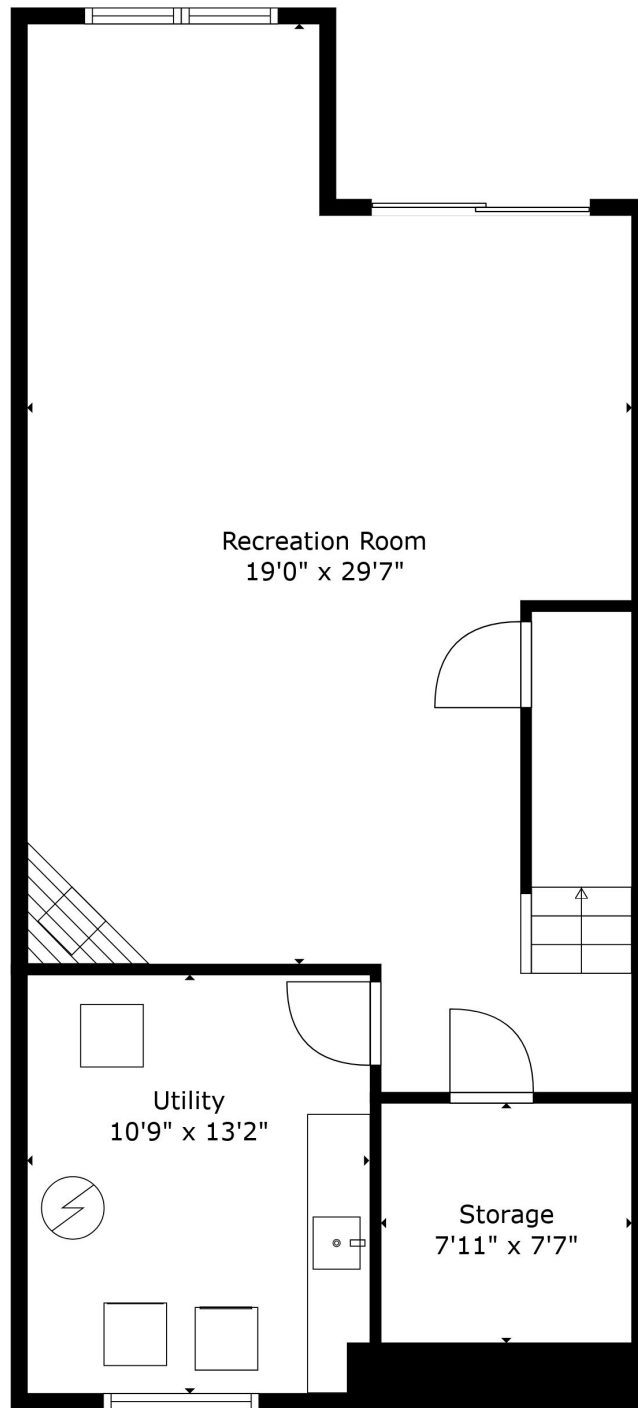


Beautiful cul-de-sac location, backing to woods with lots of parking, North Pointe features sidewalks, playground, Pickleball and Tennis Courts.



Home Systems

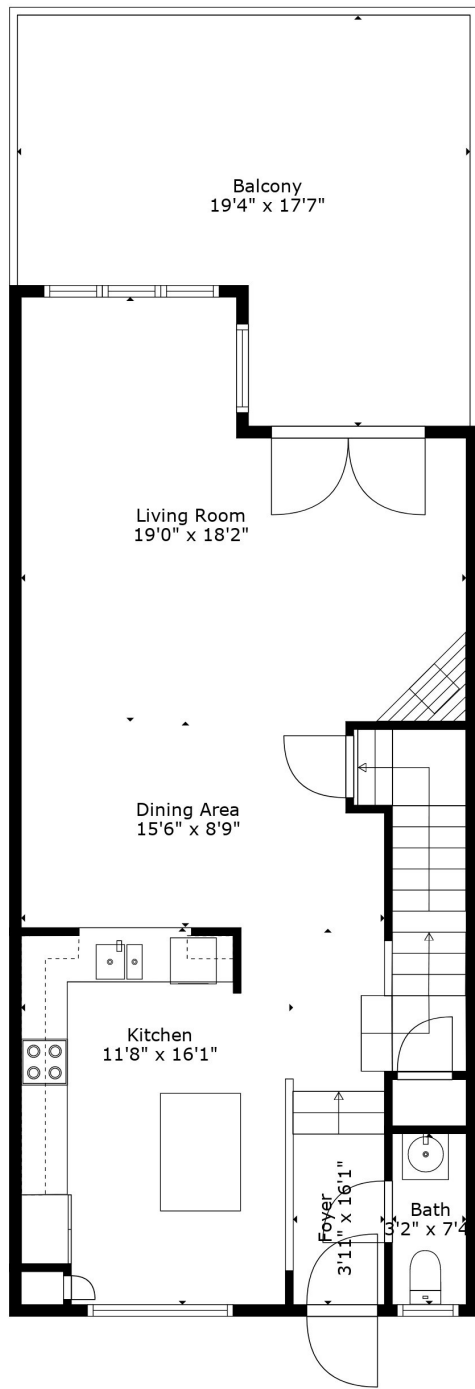
- 3 bedroom 2 and a half bath townhome
- Living Room, Dining Room, Eat-in Kitchen, and lower level Flex Room
- Primary Bedroom with en-suite Bathroom
- Powder Room off the Foyer
- Some vaulted ceilings
- Two Skylights
- New Upstairs carpeting
- Lennox gas forced air HVAC
- Emerson Smart Energy Monitor
Thermostat is web-programmable
- Bradford White 50 gallon gas water heater
- Samsung Washer and Dryer



TOTAL: 2009 sq. ft

BELOW GROUND: 543 sq. ft, FLOOR 2: 761 sq. ft, FLOOR 3: 705 sq. ft
EXCLUDED AREAS: STORAGE: 75 sq. ft, UTILITY: 142 sq. ft, BALCONY: 281 sq. ft

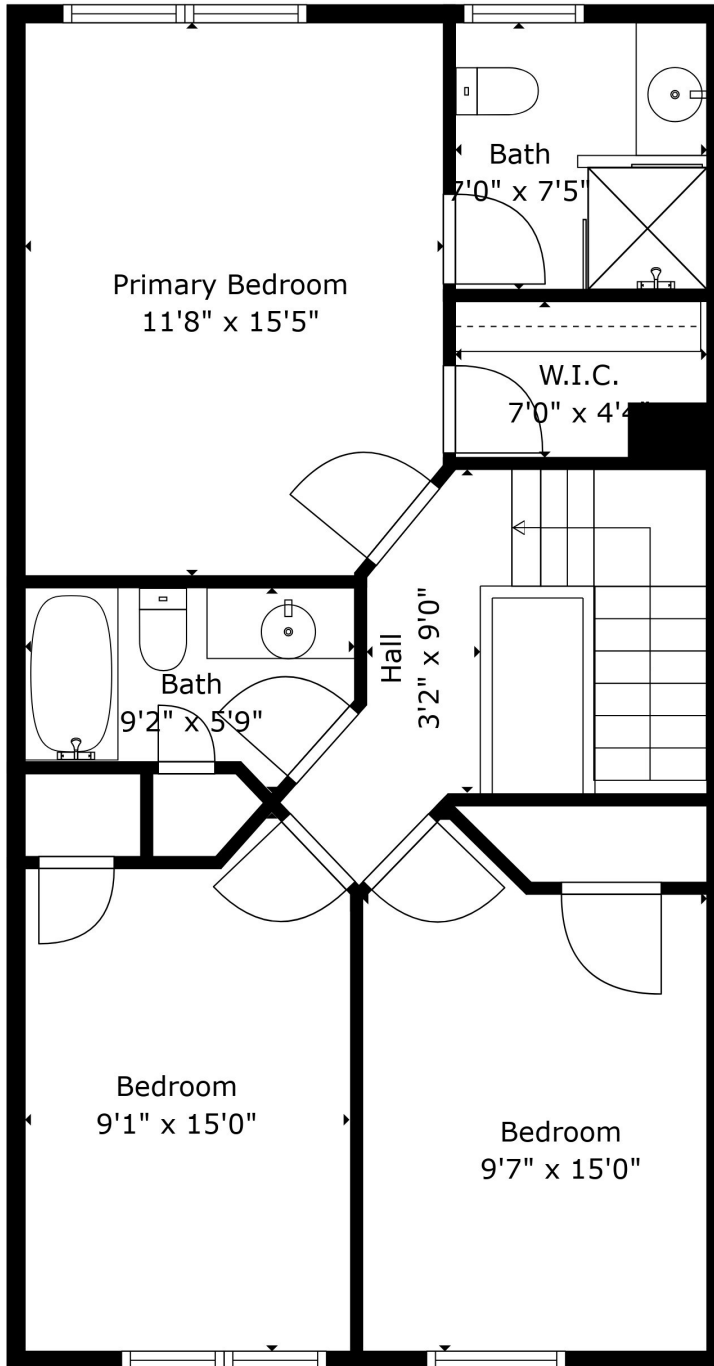
Floor Plan Created By Cubicasa App. Measurements Deemed Highly Reliable But Not Guaranteed.



TOTAL: 2009 sq. ft

BELOW GROUND: 543 sq. ft, FLOOR 2: 761 sq. ft, FLOOR 3: 705 sq. ft
EXCLUDED AREAS: STORAGE: 75 sq. ft, UTILITY: 142 sq. ft, BALCONY: 281 sq. ft

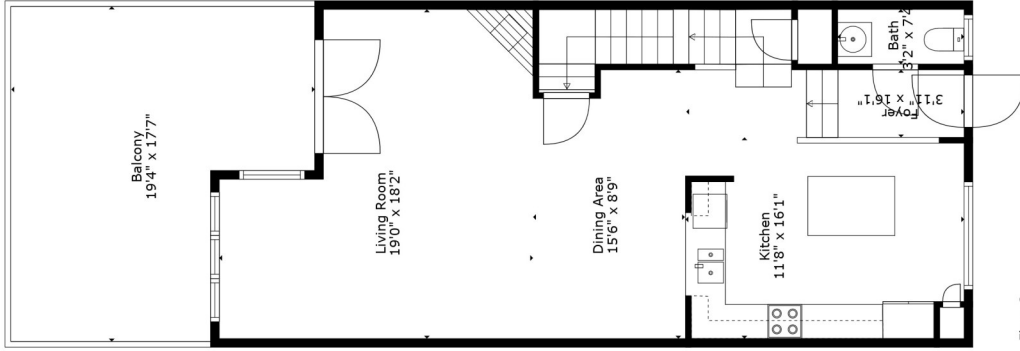
Floor Plan Created By Cubicasa App. Measurements Deemed Highly Reliable But Not Guaranteed.



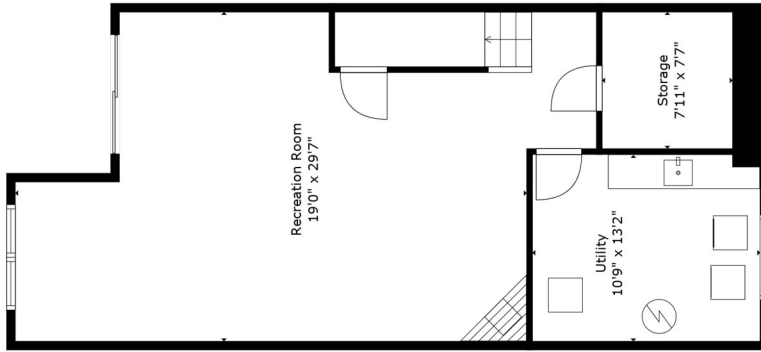
TOTAL: 2009 sq. ft

BELOW GROUND: 543 sq. ft, FLOOR 2: 761 sq. ft, FLOOR 3: 705 sq. ft
 EXCLUDED AREAS: STORAGE: 75 sq. ft, UTILITY: 142 sq. ft, BALCONY: 281 sq. ft

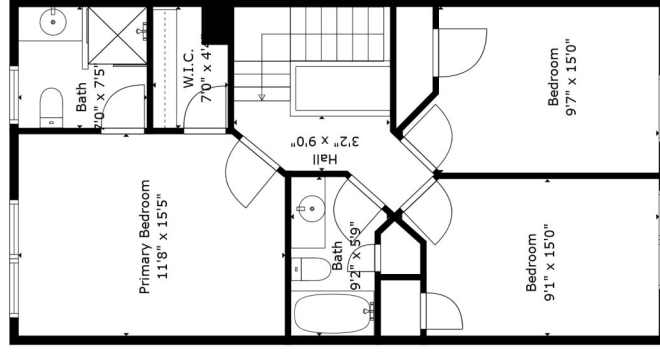
Floor Plan Created By Cubicasa App. Measurements Deemed Highly Reliable But Not Guaranteed.



Floor 2



Floor 1



Floor 3



TOTAL: 2009 sq. ft
 BELOW GROUND: 543 sq. ft, FLOOR 2: 761 sq. ft, FLOOR 3: 705 sq. ft
 EXCLUDED AREAS: STORAGE: 75 sq. ft, UTILITY: 142 sq. ft, BALCONY: 281 sq. ft

Floor Plan Created By Cubicasa App. Measurements Deemed Highly Reliable But Not Guaranteed.