

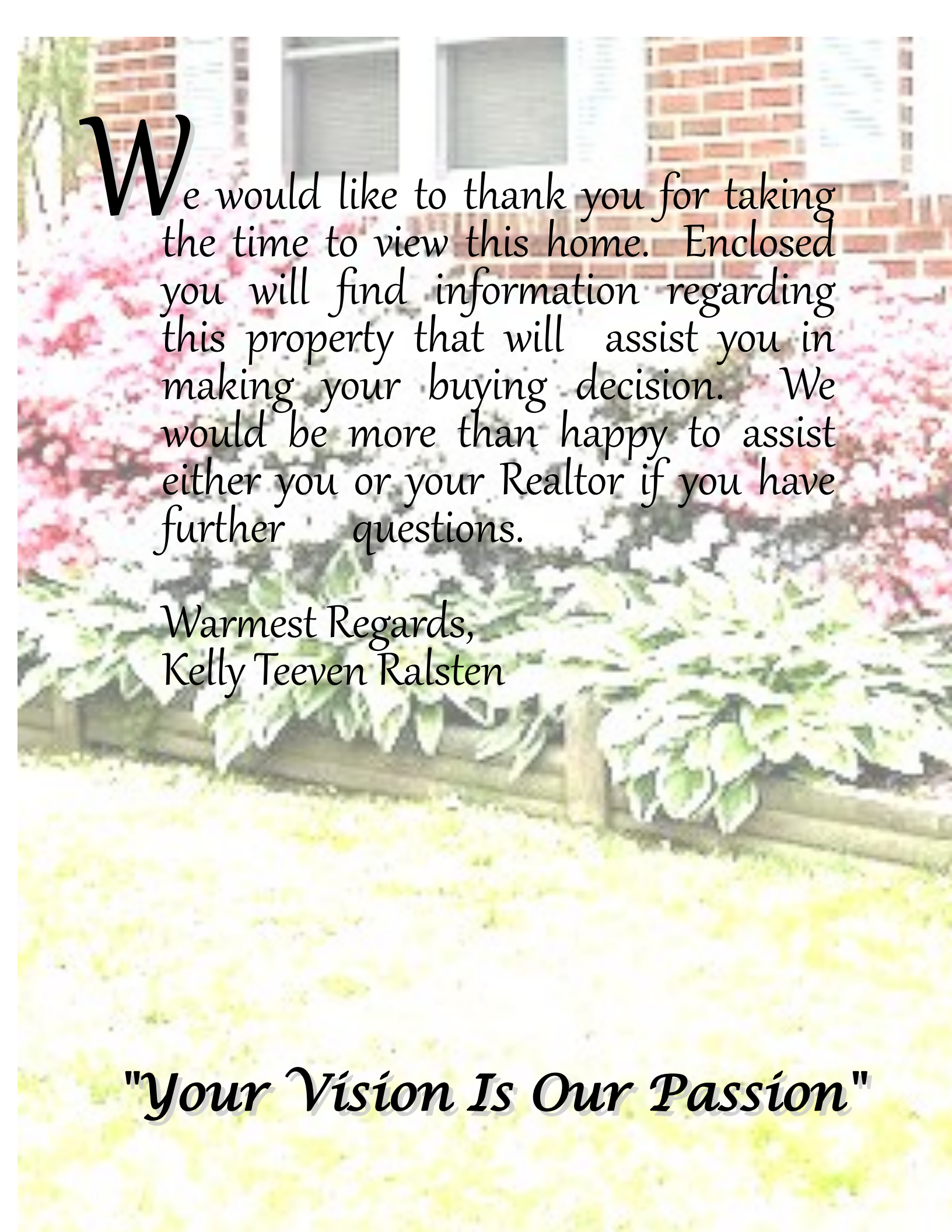
Welcome to

7 Erskine Court Greenbridge



Presented By:
Kelly Ralsten
(302) 576-6836





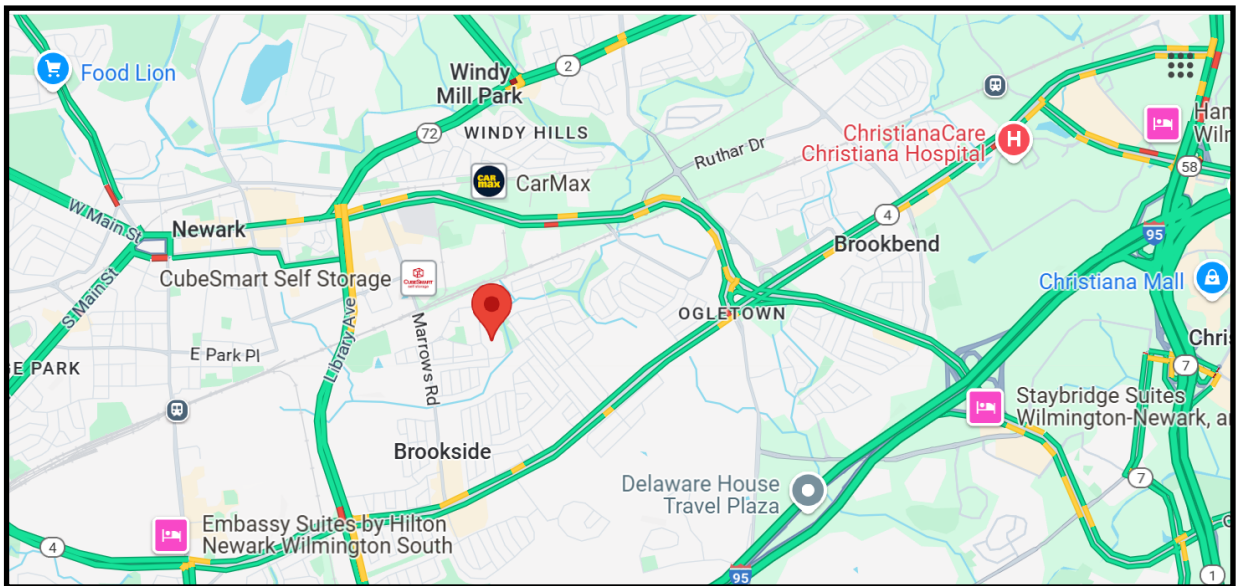
We would like to thank you for taking the time to view this home. Enclosed you will find information regarding this property that will assist you in making your buying decision. We would be more than happy to assist either you or your Realtor if you have further questions.

Warmest Regards,
Kelly Teeven Ralsten

"Your Vision Is Our Passion"

Welcome

Welcome to 7 Erskine Court in the Newark neighborhood of Greenbridge. Well located, close to Main Street, Newark Library, The Grove, STAR Campus, Newark Amtrack Station, major highways, schools and shopping. This brick ranch home features three bedrooms, one full and one half baths, Living Room, Kitchen, Dining Room, and finished Lower Level. There is a screened in Porch, large storage Shed and covered Carport.



Steps with wrought iron rail lead to front door with full view storm door. Enter into the Foyer with slate floors.

Living Room



The Living Room, with Luxury Vinyl Tile (LVT) floors, fresh paint, chair rail and crown molding trim, is highlighted by a triple picture window and is open to Dining Room and Kitchen.



Dining Rooms



The Dining Room is freshly painted with new LVT floors, and hanging light fixture.



Kitchen



This eat-in Kitchen features updated stainless steel appliances, new LVT flooring and gas cooking. There is a Whirlpool side by side refrigerator with water and ice to the door, Frigidaire dishwasher, Samsung 5 burner gas stove and oven, Kenmore exhaust hood and Cuisinart microwave.



Bedrooms One and Two



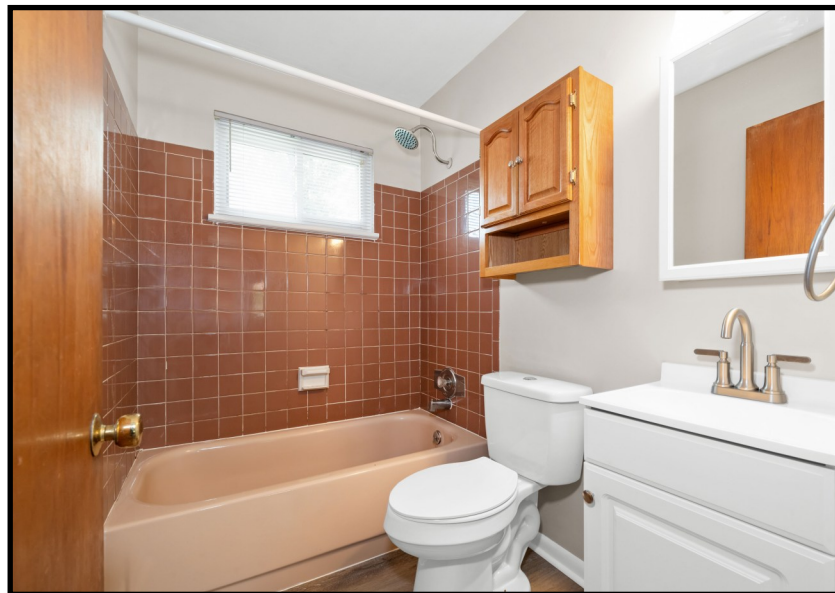
Bedroom One and Bedroom Two both feature double window, ceiling fan with light and closet.



Bedroom Three and Bath



Bedroom Three has double window, ceiling fan with light and deep closet. The full Bathroom has LVT floor and tub/shower with tile surround.



Lower Level



The Lower Level has been finished into several areas. The Great Room has drywall walls and ceiling, recessed lights, and carpet. There is a half bathroom.

Lower Level



There are two expansive unfinished areas in the Lower Level, for storage and workspace. One area has built in shelves and a large chalkboard. The other area features Laundry area with utility sink, built in shelving and cabinets, and workbench.



Backyard Fun



Screened in Porch

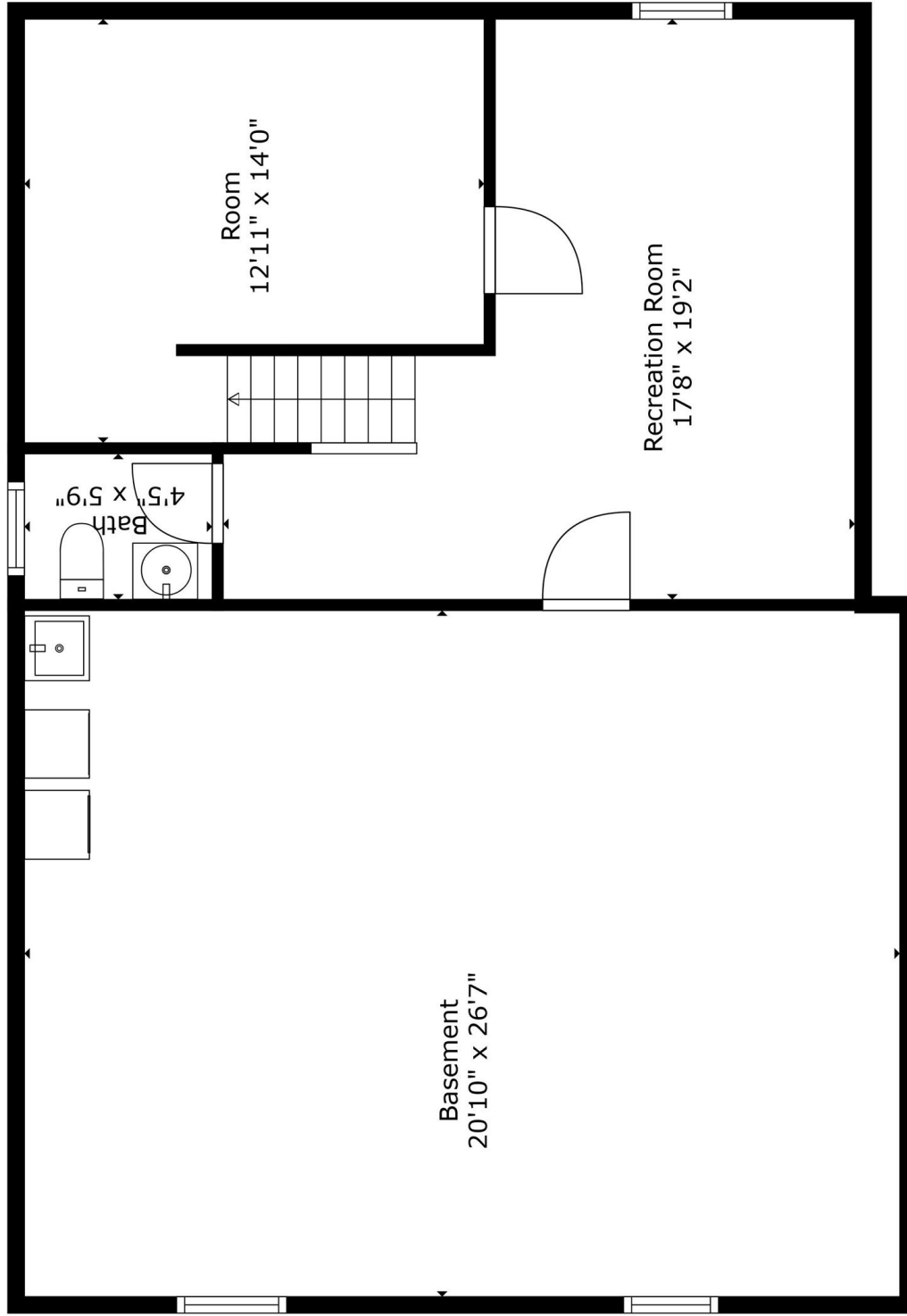
Large Storage Shed



Wide driveway
with extra spaces
and covered
carport

Home Systems

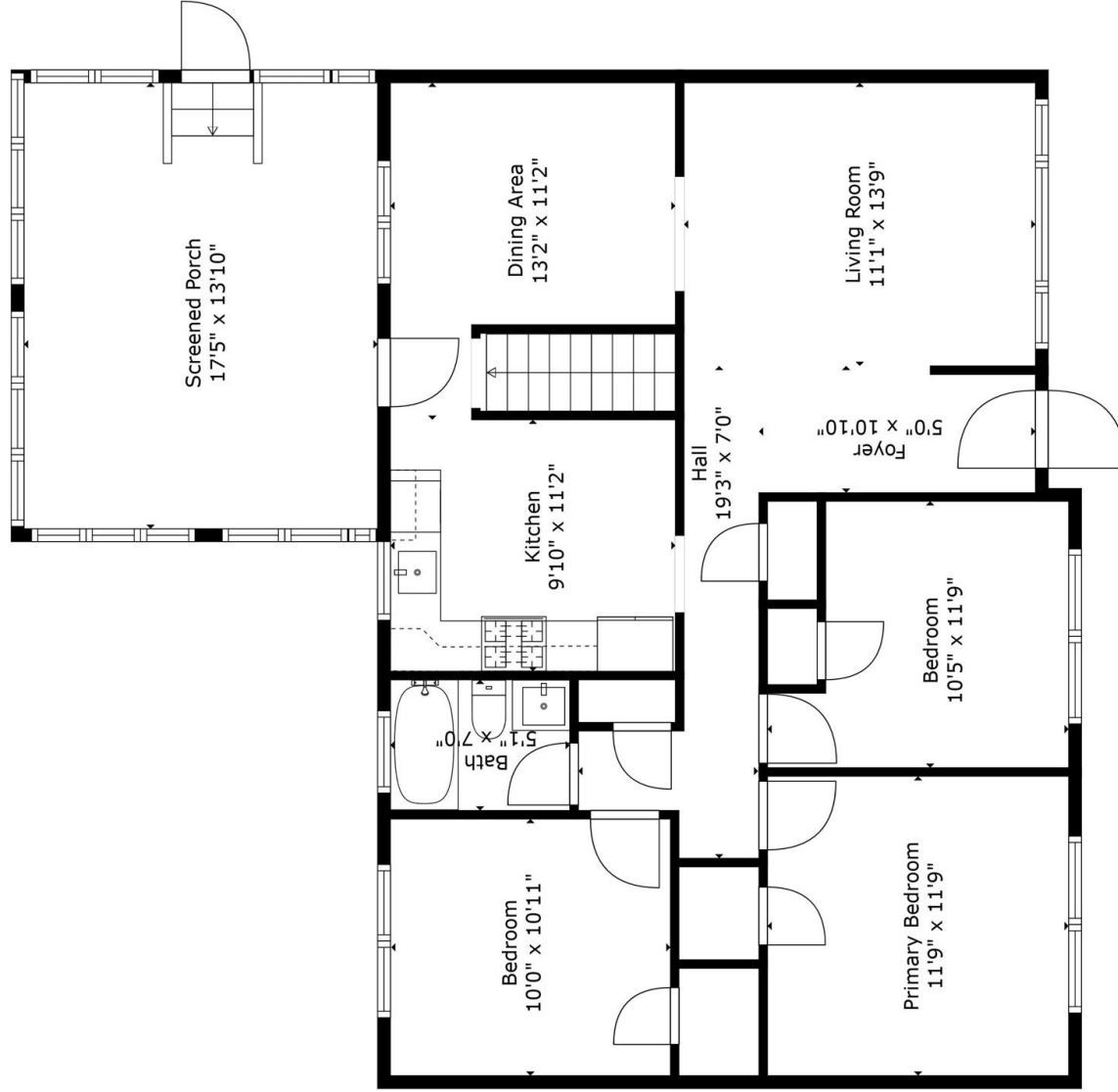
- Brick ranch with 3 bedrooms, 1 full and 1 half baths
- Luxury Vinyl Tile (LVT) and carpet flooring
- Hardwoods underneath most of the floors on the main level
- Living Room and Dining Room recently painted with LVT flooring
- Kitchen with stainless steel appliances
- French drain and sump pump
- 40 gallon Rheem gas water heater
- Goodman gas HVAC system with Honeywell air cleaner
- Washer and Dryer included
- Large Shed in backyard included
- Carport included



TOTAL: 1308 sq. ft.
BELOW GROUND: 298 sq. ft., FLOOR 2: 1010 sq. ft.
EXCLUDED AREAS: BASEMENT: 555 sq. ft., ROOM: 156 sq. ft., SCREENED PORCH: 241 sq. ft.
WALLS: 156 sq. ft.

Floor Plan Created By Cubicasa App. Measurements Deemed Highly Reliable But Not Guaranteed.



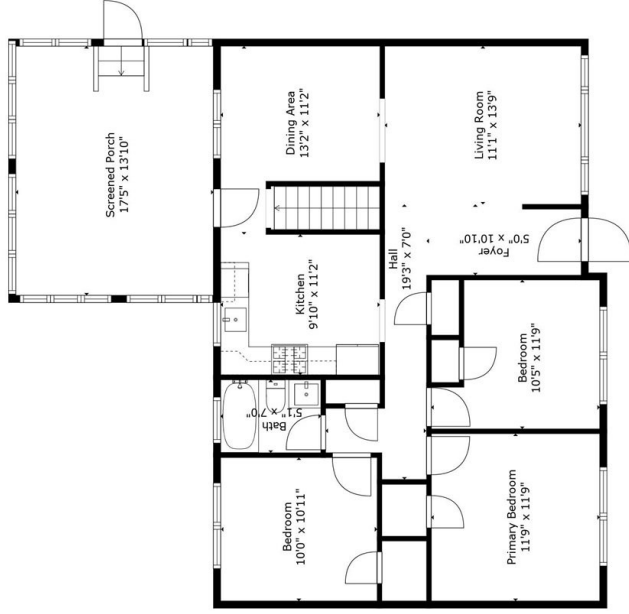


TOTAL: 1308 sq. ft

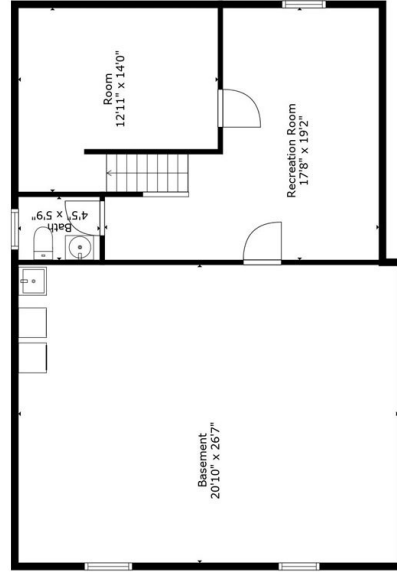
BELOW GROUND: 298 sq. ft., FLOOR 2: 1010 sq. ft.
EXCLUDED AREAS: BASEMENT: 555 sq. ft., ROOM: 156 sq. ft., SCREENED PORCH: 241 sq. ft.
WALLS: 156 sq. ft.

Floor Plan Created By Cubicasa App. Measurements Deemed Highly Reliable But Not Guaranteed.





Floor 2



Floor 1

TOTAL: 1308 sq. ft

BELOW GROUND: 298 sq. ft, FLOOR 2: 1010 sq. ft

EXCLUDED AREAS: BASEMENT: 555 sq. ft, ROOM: 156 sq. ft, SCREENED PORCH: 241 sq. ft

WALLS: 156 sq. ft

Floor Plan Created By Cubicasa App. Measurements Deemed Highly Reliable But Not Guaranteed.

