

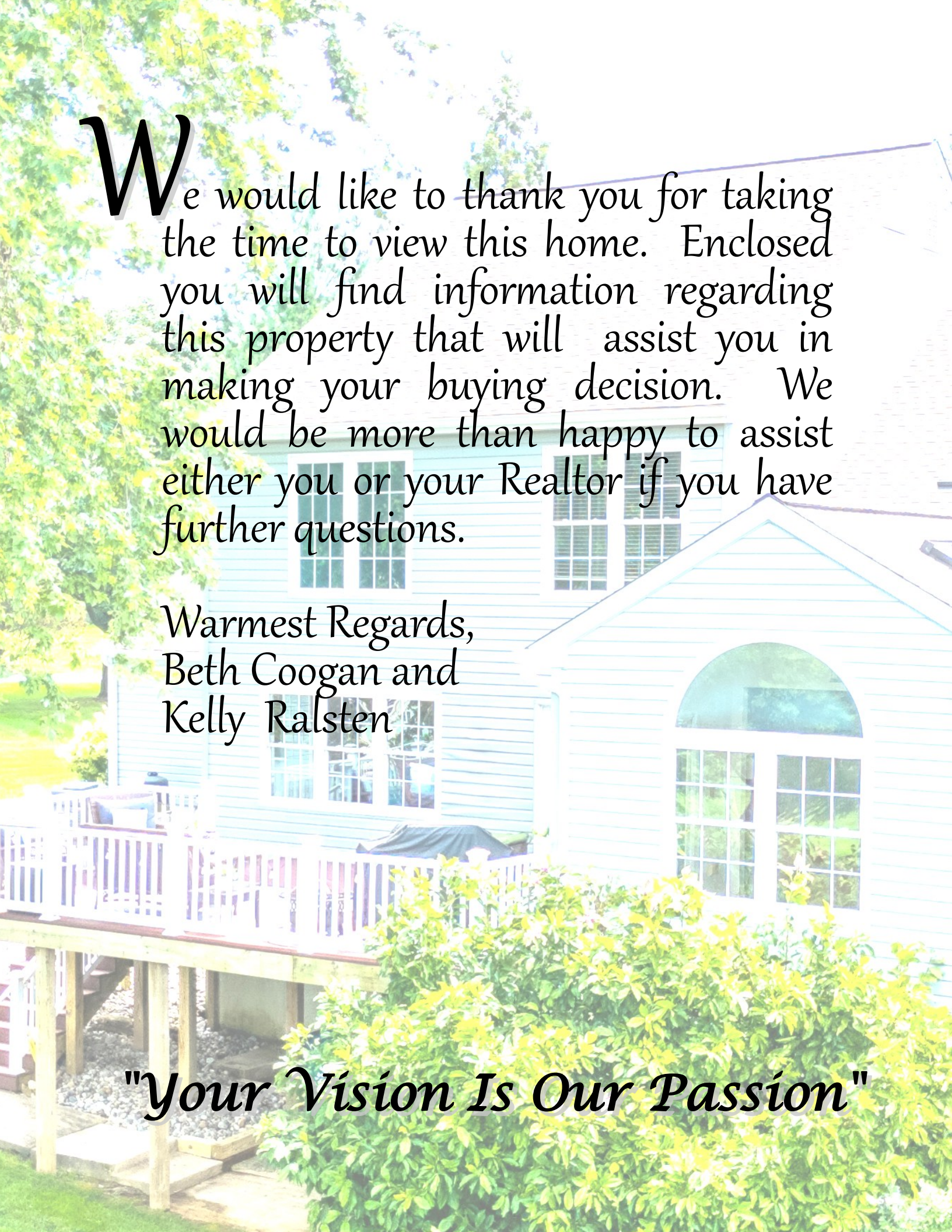
Welcome to

# 29 Morning Glen Lane Morningside



Presented By:  
Beth Coogan & Kelly Ralsten  
(302) 528-1485  
[bcoogan@psre.com](mailto:bcoogan@psre.com)



A two-story house with white siding and a white picket fence in the foreground. The house has a large arched window on the right side and several smaller windows. There are green bushes in the foreground and trees in the background.

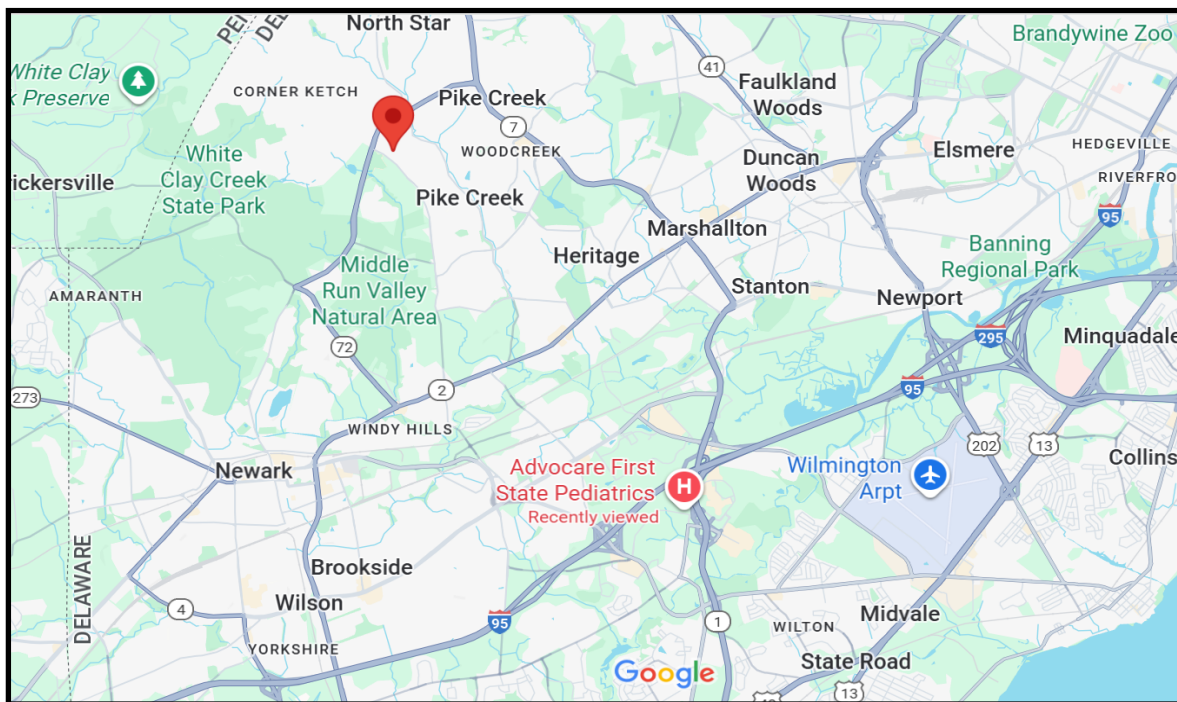
We would like to thank you for taking the time to view this home. Enclosed you will find information regarding this property that will assist you in making your buying decision. We would be more than happy to assist either you or your Realtor if you have further questions.

Warmest Regards,  
Beth Coogan and  
Kelly Ralsten

*"Your Vision Is Our Passion"*

# Welcome

Welcome to 29 Morning Glen Lane, set on over .8 acres in the Pike Creek community of Morningside. The private retreat offers a backyard oasis with an in-ground pool and expansive deck overlooking the yard and pool, and two car Garage. Inside, you'll find four bedrooms, two full and one half baths, and bright open layout. The Foyer leads to a flexible Office/Living Room, Dining Room, updated Kitchen, and sunny Breakfast Room. The Kitchen flows into the vaulted Family Room with gas fireplace and a striking Sunroom filled with natural light. The finished walkout Lower Level adds versatile space for a gym, playroom, or media area. Major updates include the roof, windows, siding, and HVAC.

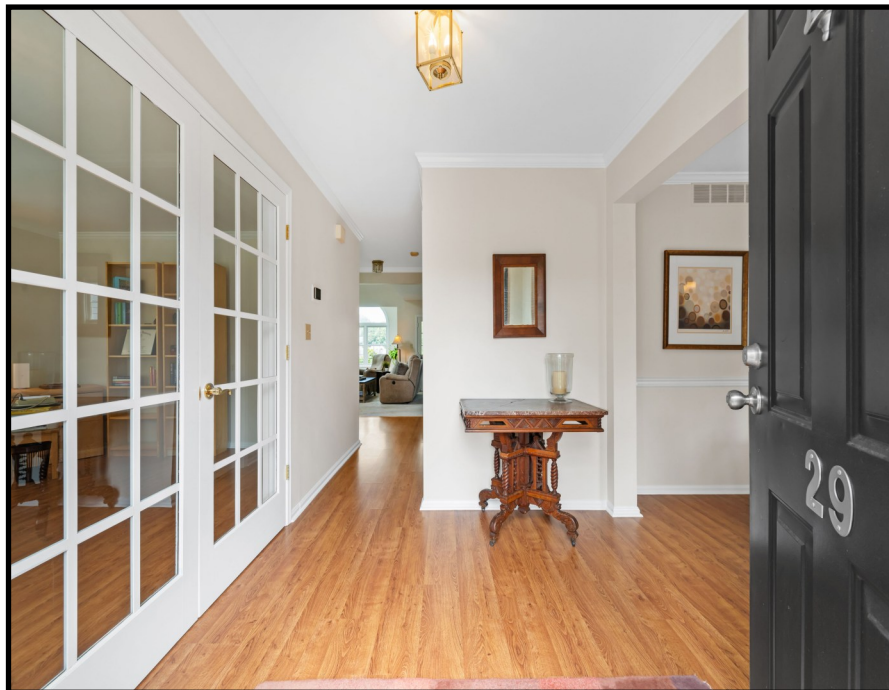


Exceptionally well located, it is a short walk to the Paper Mill Park, with tennis courts, soccer fields, baseball field, basketball courts, playground, ponds and walking trails. The White Clay Creek Park is nearby, and it's a short distance to shopping, schools, University of Delaware, and major highways.

# Gracious Living Spaces



Set on a picturesque cul-de-sac, this home features easy care landscaping with mature trees. The paver walkway leads to a covered entry. Step inside the front door with two side lights, to the light filled Foyer with hardwoods and a deep coat closet.



# Dining Room



The Dining Room is adjacent to Kitchen and open to Foyer. It features hardwood floors, designer light fixture, and chair rail and crown molding trim.



# Office/Living Room



This bright room features double French doors from Foyer as well as a single French door the Family Room. There is crown molding, triple window and two additional windows.



# Kitchen



This Kitchen is well laid out with tile floors, Corian countertops, designer light fixtures and tile backsplash. Quality stainless steel appliances include Samsung oven with smooth cooktop, Kenmore Elite microwave/convection oven, Whirlpool dishwasher and Samsung refrigerator with water and ice to the door.



# Kitchen



The light filled Breakfast Room is surrounded by windows, looking out to Deck, backyard and Pool. The Breakfast Bar counter area easily accommodates three stools. This Kitchen also includes a Pantry, generous cabinet space and countertops.



# Family Room



The Family Room is open to Kitchen, Breakfast Room, and Sunroom. The dramatic vaulted ceiling, skylight, and over sized Palladian window provide abundant light. The gas Fireplace is highlighted with a tile hearth and surround.



# Sunroom



A two-story addition expands the Family Room with a 12' x 13' Sunroom. Vaulted ceilings, two skylights, another Palladian window, and sliding glass doors to the Deck deliver lots of light and views of yard and Pool.



# First Floor Extras



The Wet Bar with cabinets, countertop and sink, is conveniently located between the Kitchen and Family Room. The Powder Room features hardwoods and tile trim details. In the Kitchen there is additional Corian topped cabinetry, the perfect spot for a coffee bar or charging station.

# Primary Bedroom Suite



The Primary Bedroom is spacious, with four windows, walk in closet, and ceiling fan with light.



# Primary Bath



The en-suite Bathroom features a new vanity with granite countertop and dual sinks, an oversized custom tile shower with dual glass doors, tile flooring and a convenient Linen closet.



# Bedroom Two



Bedroom Two has double window with blinds, ceiling fan with light, and a double door closet.



# Bedroom Three



Bedroom Three features a double window, ceiling fan with light, and a walk in closet.



# Bedroom Four



Bedroom Four has a double window with blinds, ceiling fan with light, and a double door closet.



# Second Floor Extras



The Full Hall Bath features a tub/shower, tile floor, and expanded vanity with Corian top and two sinks. The Laundry area is conveniently located on the second floor, with shelves and storage space. The washer and dryer are included. There is a well-sized Linen closet and a ceiling fan with light in the Hall.



# Finished Lower Level



The expansive walk out Basement has been finished with several areas for entertainment, work and storage. The main area is spacious with acoustic tile ceiling and recessed lights. There is a game table area, an exercise area with mirrored wall, and a spacious Rec room area. There is an unfinished section for utilities and storage.



# Make a Splash



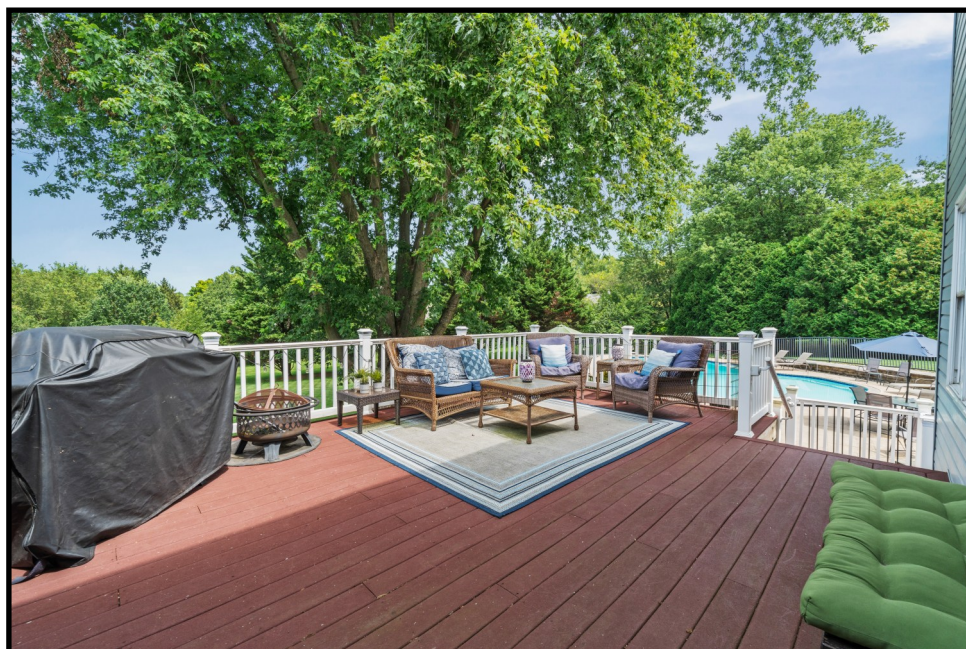
This beautiful in-ground Pool was designed and installed by Anthony/Sylan Pools in 2004. The surrounding patio provides ample space for several tables, chairs, lounges and games. Underneath the Deck there is access to a storage room for pool and outdoor equipment.



# Trex Deck



The maintenance free Trex Deck was added in 2003 as part of the Sunroom addition. Open from the Sunroom, with steps to backyard, it is roomy enough for grilling, eating and relaxing, it overlooks the spacious backyard and the fenced in Pool.



# Outdoor Fun



One of the standout features of this home is its exceptional property. Situated on one of the largest lots in the neighborhood, it's tucked at the end of a cul-de-sac and surrounded by mature landscaping and open spaces.



# Around the Neighborhood



Morningside is a beautiful neighborhood nestled among parks, trails and open spaces. The Paper Mill County Park is directly across the street from the neighborhood, and White Clay Creek State Park just beyond it.



# Home Systems

- . 4 Bedrooms, 2 full and 1 half bath home
- . 2 story Sunroom addition 2003
- . New Roof 2022, transferable warranty
- . Updated HVAC 2021
- . Heat/AC gas forced air heat pump
- . Electric baseboard heat in Lowe Level
- . Gas water heater
- . Gas Fireplace
- . Updated Andersen windows
- . Updated vinyl siding
- . Spacious walk out finished Lower Level with large Rec Room, game table area exercise area and storage areas
- . Updated Kitchen floor, countertops, tile backsplash, stainless steel appliances lighting
- . Updated Primary Bath
- . Two car Garage