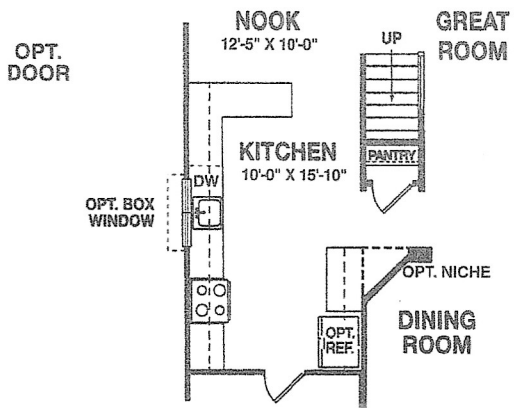
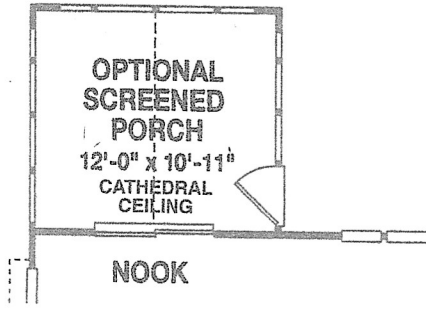


ELEV. I ONLY
ELEV. II

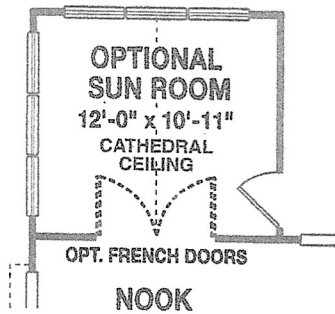


Stair Location With Loft

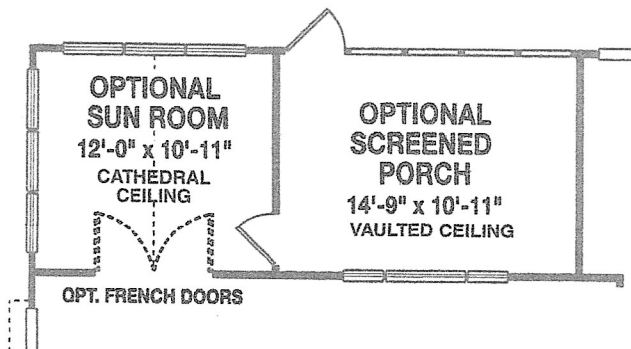
The Coleridge is available with an optional storage room above the garage.



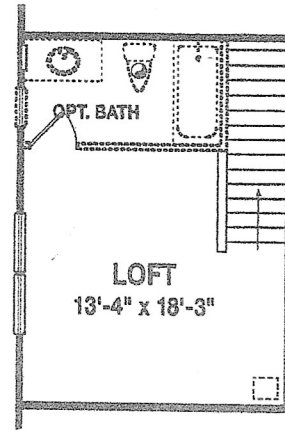
Optional Screened Porch



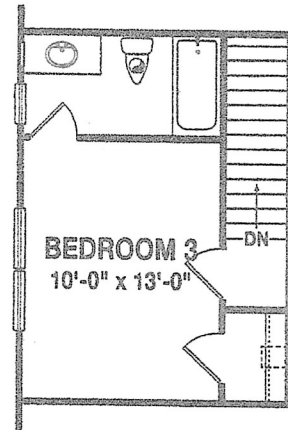
Optional Sunroom



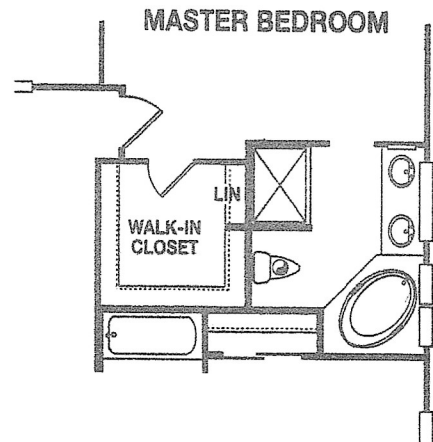
Optional Screened Porch & Sunroom Combo



Optional Loft With Optional Bath



Optional Loft Bedroom With Bath



Alternate Master Bath Layout (as shown in model)

Standard Features

Interiors for the way you want to live ...

- Convenient single-story living
- Spacious master suite
- Private second bedroom
- Full master bath, full 2nd bath
- Stain resistant wall-to-wall carpeting in choice of colors
- Classic six-panel interior doors
- Elegant designer lever handles on interior doors
- Vinyl coated ventilated shelving in all closets
- Nine foot ceilings on all first floors
- First floor laundries with washer/dryer hook-up
- Attached two-car garage with automatic openers

No-maintenance exterior features and finishes ...

- 25-year roof architectural shingles in choice of colors
- Vinyl siding with brick facade on select models
- Steel garage doors with weatherstripping
- Concrete walks and front porches
- Each home professionally landscaped
- Pre-finished raised panel shutters
- Aluminum wrapped soffits and fascias
- Durable aluminum gutters and downspouts
- Frost free exterior hose connection at each side
- Two exterior watertight electrical outlets on G.F.I. circuit
- Two coat asphalt driveway
- Decorative fypons and vinyl lineals

A kitchen that is fun to cook in ...

- Separate breakfast area in kitchen
- GE self-cleaning oven/range
- GE dishwasher
- GE space-saver microwave/hood
- Waste disposal
- Quality Yorktowne oak cabinets in choice of finishes
- Easy-care laminate countertops in choice of colors
- No-wax resilient flooring
- Single-bowl stainless steel sink with lever handled faucet

Spacious baths that are easy to care for ...

- Molded one-piece master shower with two seats
- Temperature-balanced shower controls
- Cultured marble tops with integral bowl
- Ceramic tile floor in master bath
- One-piece tub/shower in second bath
- Large plate mirrors with Hollywood strip lighting
- Easy to use single lever washerless faucets
- Medicine cabinets at all baths

Energy efficient living with safety features built right in ...

- Economical gas heat
- 50-gallon gas hot water heater
- Central air-conditioning
- Composite R-16 wall insulation and R-30 ceiling insulation
- Energy infiltration package
- Insulated 6-panel front door
- Thermal insulated windows and sliding doors with screens
- Hardwired electric smoke detectors

The very latest in utilities and improvements ...

- 200 Amp electrical service
- Pre-wired for two telephone locations (optional locations available)
- Pre-wiring can accommodate an optional second telephone line
- Pre-wired for two cable TV locations (optional locations available)
- Separate utilities to each home
- All utilities underground
- 6' wide public sidewalks
- Street lighting



The Auden, Brooke, Coleridge and Dunbar model homes at Springmill were partially constructed by Kevin Scarborough Homes prior to The McKee Group's acquisition of the community from that company. To improve the value and function of the homes of Springmill, the McKee Group has changed some of the standard features and made minor variations to the floor plans shown in those models. Please ask your sales counselor to review those changes with you prior to your purchase of a new home at Springmill.